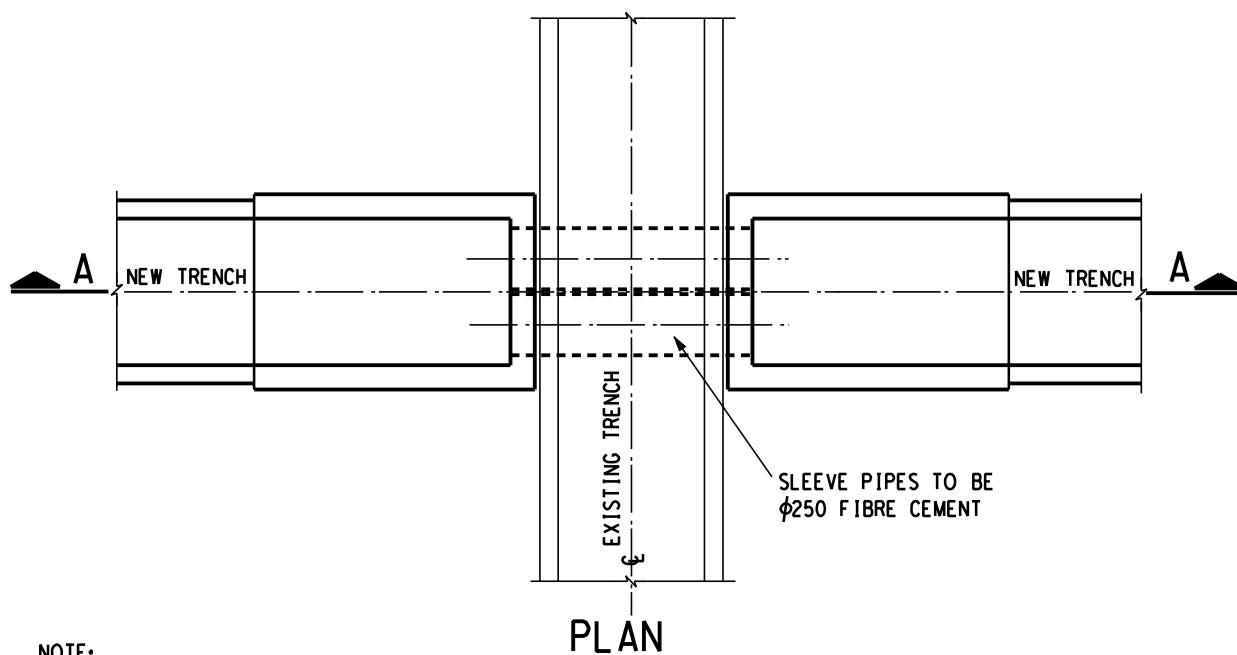


FOR TRENCH SECTIONS SEE DETAIL 16

FOR TRENCH COVERS SEE DETAIL 17A.

ARRANGEMENT OF TRENCH COVERS

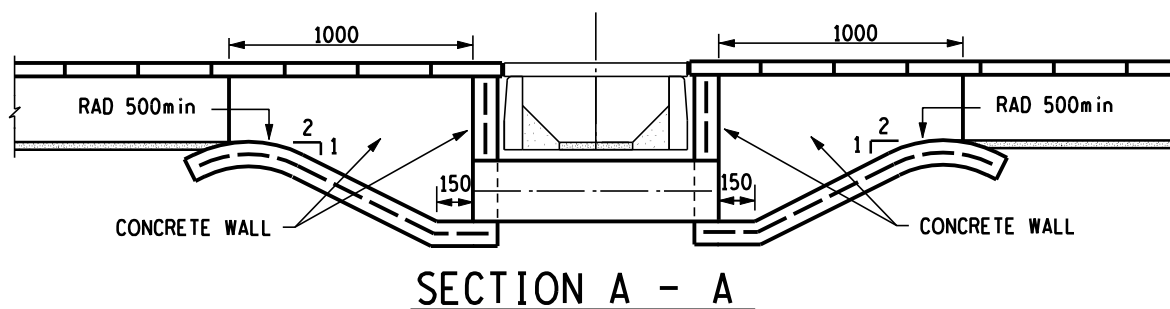


NOTE:

MESH REF 245 IN WALLS AND FLOOR

WALLS 100mm THICK

FLOOR 100mm THICK



CABLE TRENCH

CROSSING DETAIL WITH SLEEVES

TRANSMISSION
SUBSTATION
TECHNOLOGY
DEPARTMENT



ESKOM

DRAWN
GETEKEN

DJC.S

27.01
2000

CHKD
NAGES

DB.N.

27.01
2000

AUTH
MAS

REV

0

DATE
DATUM

**H V YARD CIVIL WORK
STANDARD DETAILS**

0.54/390

SHEET 29b

DRG.TEK
REGISTR

A4L